

Daventry

28 High Street, Daventry, NN11 4HU

T: 01327 879869

Offices also located in Northampton

stonhills.co.uk



8 Chamomile Way, Daventry  
NN11 4WA

£350,000



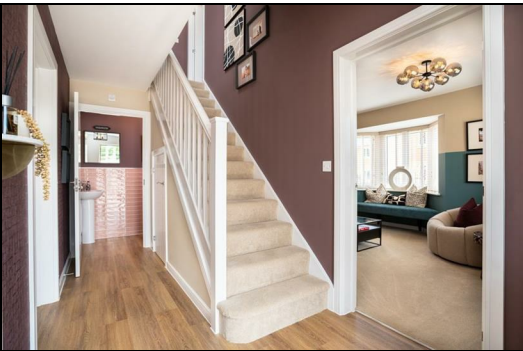
Stonhills are delighted to offer this brand new detached family home, attractively positioned within the up-and-coming Staverton Lodge development. Constructed by the highly regarded Bellway Homes to their popular Thespian design, the property seamlessly blends contemporary styling with thoughtfully arranged, practical family accommodation.

The accommodation is centred around a modern open-plan kitchen and dining area, fitted with a range of stylish units and enhanced by French doors opening onto the rear garden - ideal for both everyday living and entertaining. Further ground floor highlights include a sleek cloakroom and a separate dual-aspect living room, featuring an attractive bay window that allows for an abundance of natural light.

Upstairs, the property offers three well-proportioned bedrooms, comprising two generous doubles and a single bedroom. The principal bedroom is further complemented by a modern en suite shower room, while the remaining bedrooms are served by a contemporary family bathroom

Energy Efficiency Rating		
	Current	Potential
Very energy efficient - lower running costs		
(92 plus) A		
(81-91) B		
(69-80) C		
(55-68) D		
(39-54) E		
(21-38) F		
(1-20) G		
Not energy efficient - higher running costs		
England & Wales		
EU Directive 2002/91/EC		

Environmental Impact (CO <sub>2</sub> ) Rating		
	Current	Potential
Very environmentally friendly - lower CO <sub>2</sub> emissions		
(92 plus) A		
(81-91) B		
(69-80) C		
(55-68) D		
(39-54) E		
(21-38) F		
(1-20) G		
Not environmentally friendly - higher CO <sub>2</sub> emissions		
England & Wales		
EU Directive 2002/91/EC		



**Zoopla.co.uk**

**THE NATIONAL ASSOCIATION OF ESTATE AGENTS**  
**NAEA**  
ESTATE AGENTS

**Ombudsman**  
www.oea.co.uk

**rightmove.co.uk**  
The UK's number one property website

Appliances: Stonhills have not tested any equipment, fittings for services and so cannot verify they are in working order. The buyer is advised to obtain verification from their Solicitor or Surveyor. Measurements are for guidance only and are approximate. The buyer is therefore advised to check measurements if they are required for any other purpose e.g. fitted carpets, furniture, etc.